

STM-8800



- Table of Contents -

I. Initialize to Factory Default -----	3
II. How to download OS Image -----	4
1. Using SD Card -----	5
2. Using USB cable and DNW.exe program -----	6
III. PC Connection -----	14
1. Microsoft ActiveSync Installation -----	15
2. Connect to a PC to install the program -----	17
3. KITL Connect -----	18
IV. Remarks -----	21

Initialize to factory default

► Initializing the Mobile Device back to the factory default settings (Hard Reset)

There are many possible reasons why the Mobile Device has to be reinitialize back to the factory default setting, like, when the device would not respond even after performing a reset or the user forgets the password set on the system. This process is called “Hard Reset.” When performing hard reset, all information in the RAM (files, system settings, installed programs) will be cleared.

To insure the safety/integrity of the information, make a backup or make a copy of it in the SD card before performing a hard reset. Restore the information after the hard reset process to recover the information.

As said earlier, all information stored in the Mobile Device’s RAM and ROM will be cleared after performing a hard reset. However, it is possible to recover information backed up to the PC, SD card or the Web folder

To perform a Hard Reset:

1. Remove the Mobile Device form the cradle.
2. Perform the following depending on the power state of the device:
 - When the device is powered on, while holding down the [1]-[#] buttons, poke the reset key using the Stylus pen.
 - When the device is powered off, while holding down the [1]-[#] buttons, press the [power on] button.
3. Wait until the Mobile Device re-starts.





How to download OS image

1. Using SD card
2. Using USB cable and DNW.exe program

► Before performing the procedure, copy the OS image to an SD card and insert the same to the SD card slot of the STM-8800 device

1. Hold the [UP] (left side's ▲) and [CAMERA] (right side's "C") buttons simultaneously then press the [RESET] hole/button
2. You should be seeing the EBoot menu.
3. Load BOOTLOADER, EBOOT program and OS Image:
 - Using the Up/Down function buttons, select the "BOOTLOADER download" option to load Bootloader program. Press [SCANNER] button (right side's "S") to finalize selection.
(At this point system will bootup. Re-enter the Eboot menu.)
 - Using the Up/Down function buttons, select the "EBOOT Image download" option to load EBoot Loader program. Press [SCANNER] button (right side's "S") to finalize selection.
(At this point system will bootup. Re-enter the Eboot menu.)
 - Using the Up/Down function buttons, select the "OS Image Download" option to load OS Image. Press [SCANNER] button (right side's "S") to finalize selection.

4. Wait for a while until the upgrade is completed.



```

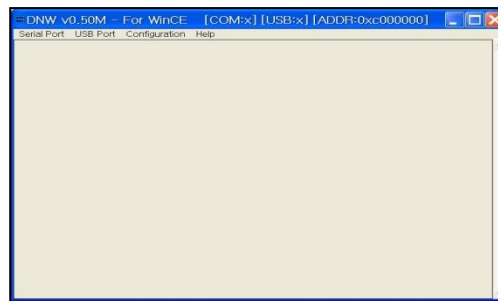
STM-8800  EBOOT MENU  Ver 0.2
          Jul 14 2010  17:41:27

>1.  BOOTLOADER DOWNLOAD
2.  EBOOT IMAGE DOWNLOAD
3.  OS IMAGE DOWNLOAD
4.  SPLASH IMAGE DOWNLOAD
5.  DIAGNOSTIC MODE
6.  TOC CLEAN
  
```

Using USB cable and DNW.exe program

► Before performing the procedure, make sure you have a copy of the STM-8800 OS image, DNW.exe application, and SEC S3C6410X Test B/D device driver (secusb2 and wceusbsh setup information and system files) on your PC. Also, make use that you have a USB cable.

1. Locate for and run the DNW.exe application.



2. Connect the STM-8800 to the computer using a USB cable and perform the following depending on the device's power state:

- When the device is powered on, while holding down the [SCANNER] (right side's "S") button, poke the reset key using the Stylus pen.
- When the device is powered off, while holding down the [SCANNER] (right side's "S") button, press the [POWER ON] button.



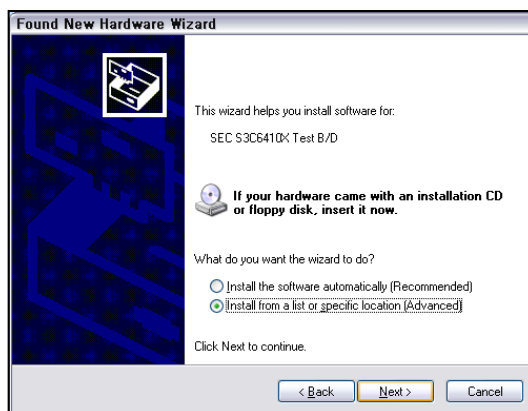
Using USB cable and DNW.exe program

3. At this point, the device will not reboot fully but your computer will detect the presence of this device. If you are connecting the device to the computer for the first time you may need to install the device driver. Please perform the following procedures:

- The computer will detect the existence of the new device and will display the “Found New Hardware” wizard.

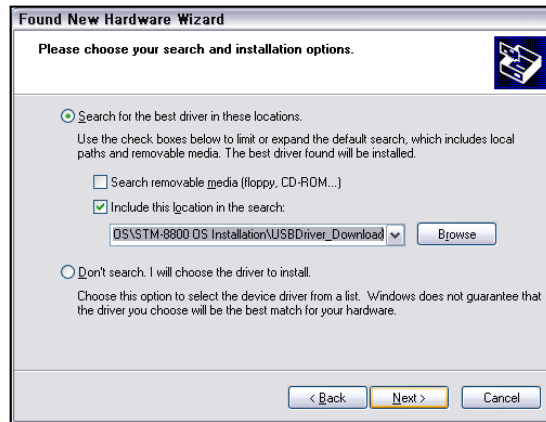


- Select “Yes, this time only” and then click the [Next] button

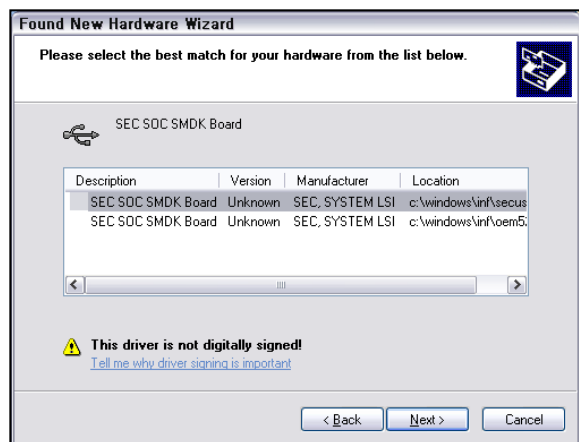
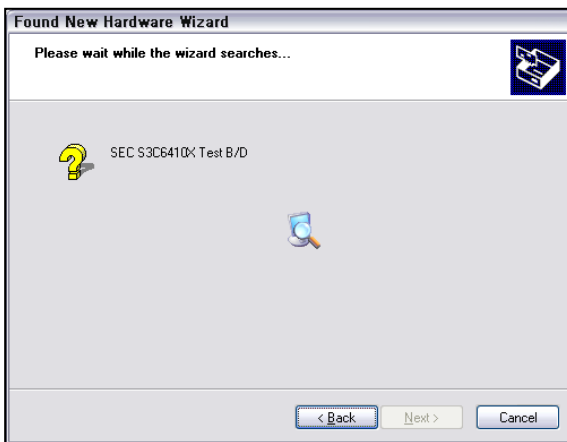


- Select “Install from a list or specific location (Advanced)” and then click the [Next] button.

Using USB cable and DNW.exe program

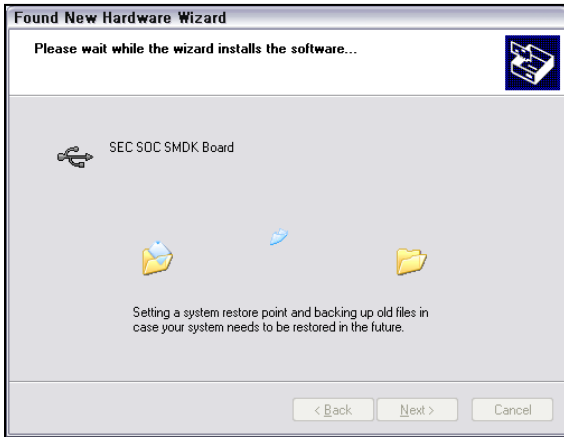


- Select the following options:
 - ✓ “Search for the best driver in these locations.”
 - ✓ “Include this location in the search.”
- Browse and locate for the SEC S3C6410X Test B/D device driver
- Click the [Next] button.

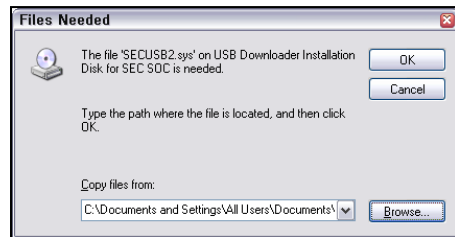
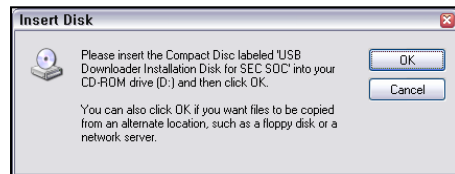
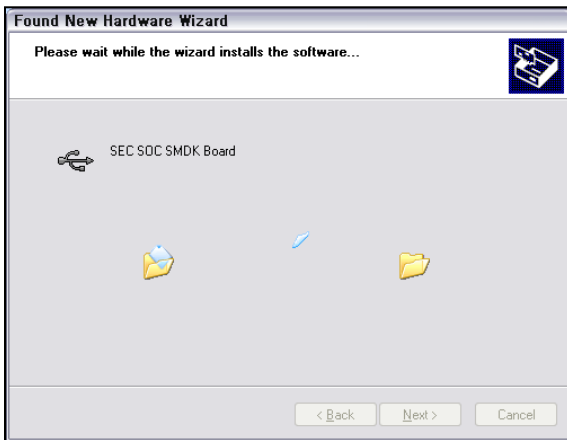


- The wizard will then search for the device driver. The wizard may ask you to select the best match for your hardware. Select the “secusb2” and then click the [Next] button.

Using USB cable and DNW.exe program



- The wizard will start to set a system restore point and back-up old files. The Hardware Installation warning window may appear. If this window appears, click the [Continue Anyway] button.



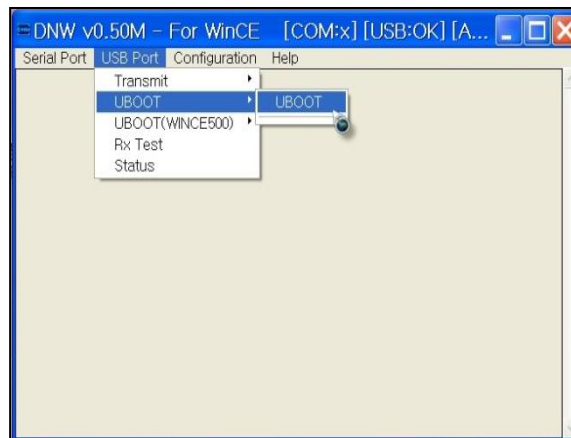
- The hardware installation wizard will start to install the device driver. The “Insert Disk” window may appear. If it did appear, click the [OK] button. The “Files Needed” window will then appear. Browse and locate for the device driver then click the [OK] button. The device driver installation continues.

Using USB cable and DNW.exe program



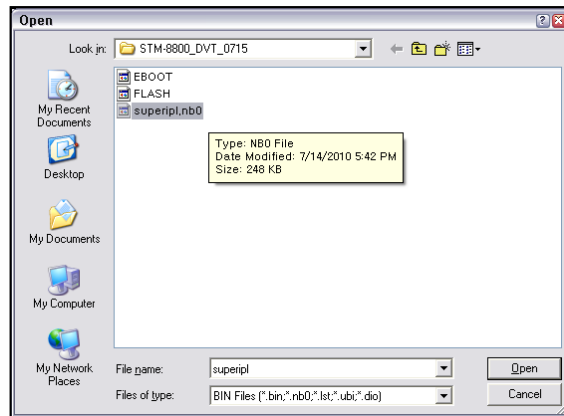
- Upon installation completion, the above window appears. Click the [Finish] button to complete the installation.

4. Start uploading the SuperIPL image on to the device using the DNW.exe application.

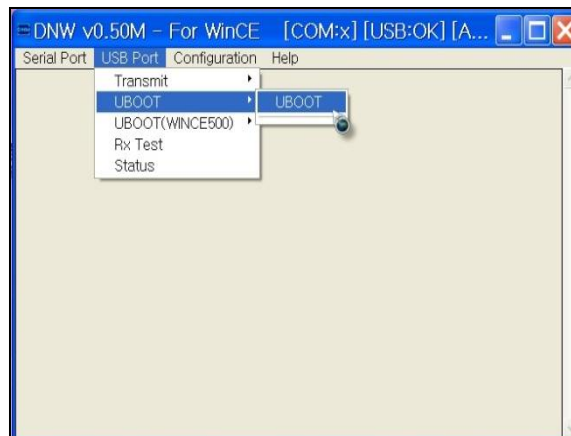


- Click on [USB Port] > [UBOOT] > {UBOOT}

Using USB cable and DNW.exe program

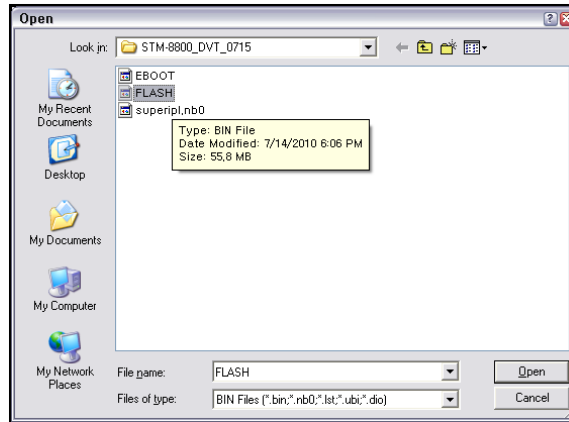


- Browse and locate for the SuperIPL image “**SuperIPL.nb0**” to download on to the STM-8800 device. Then click the [OPEN] button.
 - The DNW.exe program will start to download the SuperIPL image. When the device’s LCD Display starts to flicker (LCD backlight turns off and on), it signals that the downloading process is completed.
5. Start uploading the OS Image on to the device using the DNW.exe application.
- To re-enter download mode, while holding down the [SCANNER] (right side’s “S”) button, poke the reset key using the Stylus pen.



- Click on [USB Port] > [UBOOT] > {UBOOT}

Using USB cable and DNW.exe program



- Browse and locate for the OS Image “**flash.bin**” to download on to the STM-8800 device. Then click the [OPEN] button.



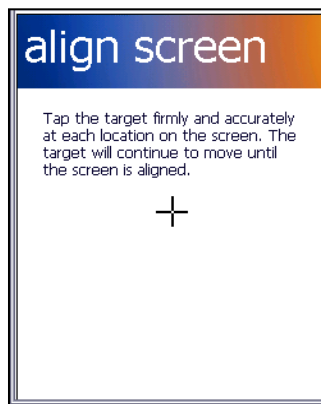
- The OS Image will start to download. Wait for the download to be completed and the device to boot up.
- ❖ **Do not disconnect USB cable until Windows logo displays on the device.**
- ❖ **When downloading KITL image, wait 3 minutes after the progress bar of the “Downloading ...” window disappear. It is only at this point that a PC can connect to the device by KITL Connect (see section III-2, KITL Connect).**

Using USB cable and DNW.exe program

5. After the device boots up, it displays the Windows Mobile® screen which guides you through a series of startup procedures..



- From the initial startup screen tap the screen using the stylus.



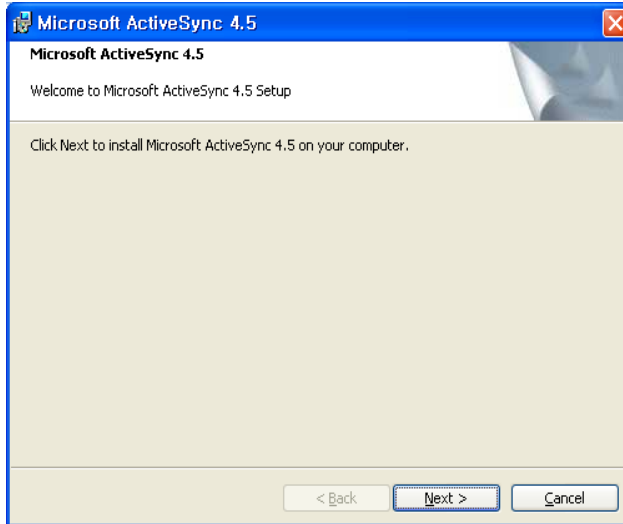
- From the align screen, use your stylus to calibrate the touch accuracy of the screen by both accurately and firmly tapping the center of each target (crosshair). Repeat this process for every target that appears until completed.

1. Microsoft ActiveSync installation
2. Connect to a PC to install the program
3. KITL Connect

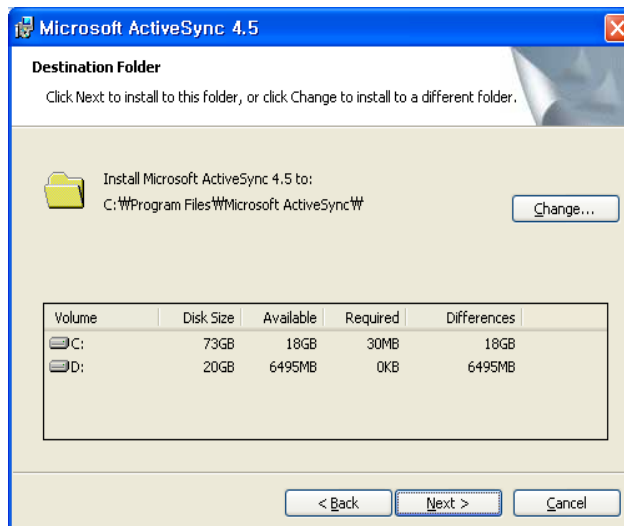
Using Microsoft ActiveSync, you can synchronize the information on your personal computer with information on your STM-8800. Synchronization compares the data on your PDA with your personal computer and updates both devices with the most recent information. To establish a partnership with a PC, you need to install Microsoft ActiveSync on your PC. You can download ActiveSync at www.microsoft.com/korea.

Microsoft ActiveSync installation

1. Download and run the Active Sync installation program. Please click the [Next] button if you are ready to Set-up ActiveSync.

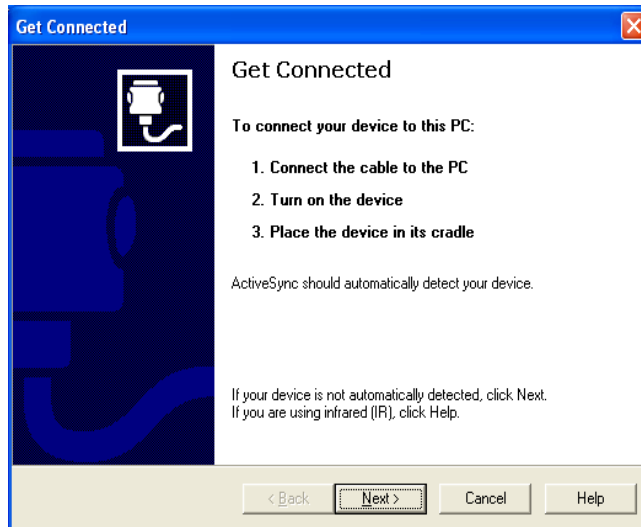


2. You're prompted to select the installation folder for ActiveSync. Click the [Next] button to install ActiveSync to the default folder, or click the [Change] button to select a different destination for the program.



Microsoft ActiveSync installation

3. Click on the [Next] button.



4. ActiveSync installation is finished. Please turn on and put the STM-8800 unit on to the cradle with USB cable connected to the PC. (use USB 2.0 or higher)

Connect to a PC to install the program

▶ Using ActiveSync for program installation

▷ Using the Installation programs (Setup.exe or Install.exe)

1. Download the installation program to the PC or insert the installation CD in the PC's CD drive.
2. Connect the Mobile Device to the PC via ActiveSync.
3. Locate for and double-click on the installation program (Setup.exe or Install.exe) on the PC.
4. Files will be automatically copied to the Mobile Device through ActiveSync.

▷ Using the *.cab files

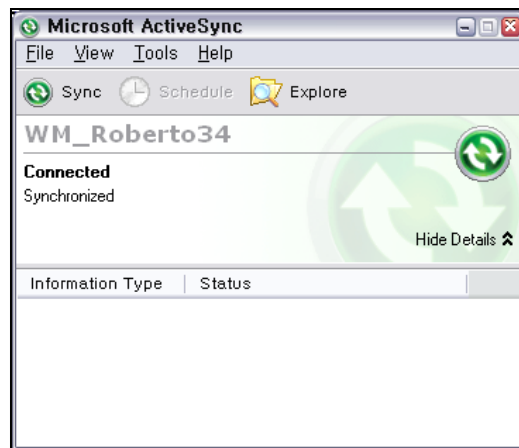
1. Download the installation program to the PC or insert the installation CD in the PC's CD drive.
2. Connect the Mobile Device to the PC via ActiveSync.
3. Using ActiveSync's Explore function in the PC, copy and paste the *.cab files to any folder (My Documents/Program Files) in the Mobile Device.
4. From the Mobile Device, double-click on the copied *.cab file. This process will install the program to the Mobile Device.

-Reference-

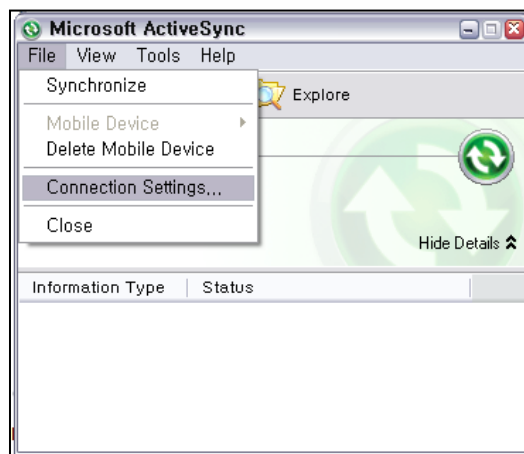
- 1) Always consult the Read Me file or other related documents to verify if all required files are copied.
- 2) Consult the ActiveSync Help for more information on how to copy files using the ActiveSync.

► **KITL Connect requires the use of the Platform Builder. Make sure that this application is installed into the computer.**

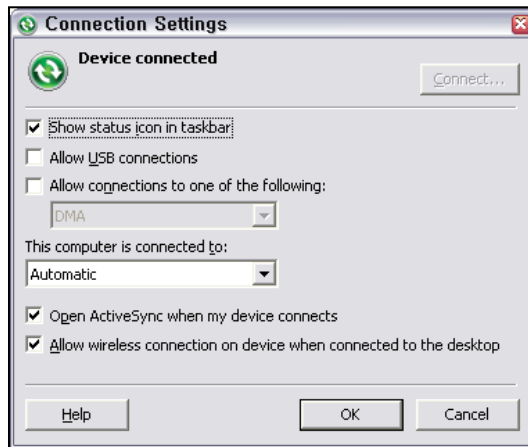
1. Connect the STM-8800 to the computer using a USB cable. When the device is powered on, the computer will then detect the device and the Microsoft ActiveSync will start to connect to the device.



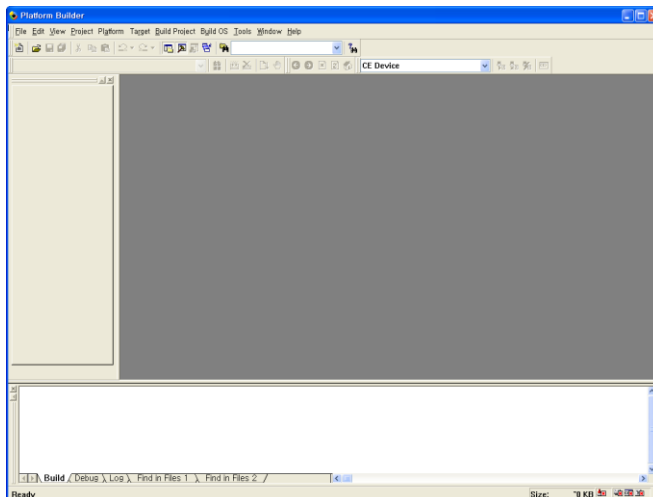
2. Disconnect the STM-8800 device from the Microsoft ActiveSync.



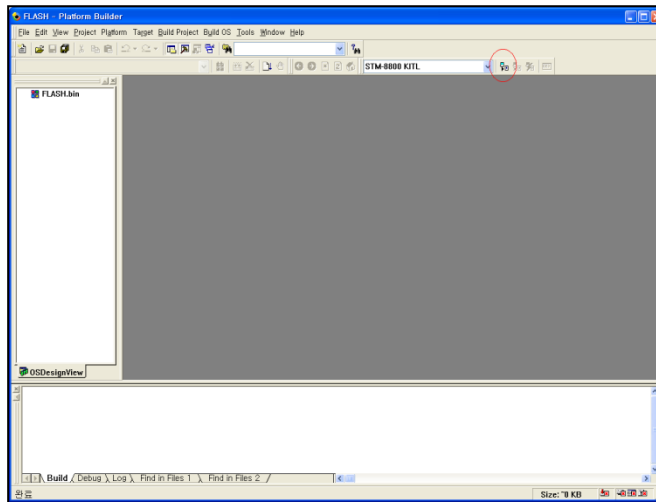
- Click on [FILE] > [CONNECTION SETTINGS...]



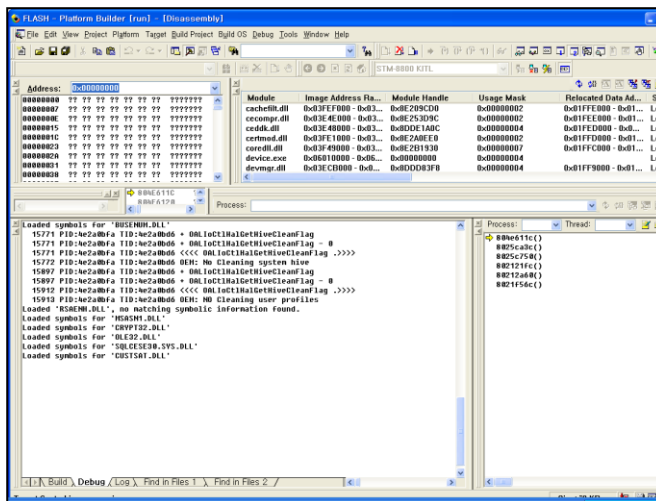
- On the “Connection Settings” window, uncheck the following:
 - “Allow USB connections”
 - “Allow connections to one of the following:”
 - Click on the [OK] button.
3. Power on the STM-8800 device if it is powered off.
 4. Run the platform builder.



5. Select [Project] on the platform builder and RUN it.



6. At this point, connection should have been established.



1. You cannot TURN-ON the device when the battery is fully/totally discharged.
2. Place the device on the cradle, connect the DC-Adapter to the cradle and plug-in to the Power outlet to charge the device's battery.
3. You can TURN-ON the device while it is on the cradle and the battery is charging .



STM-8800

TEL + 82 2 2081 9393 HOMEPAGE www.wjst.co.kr